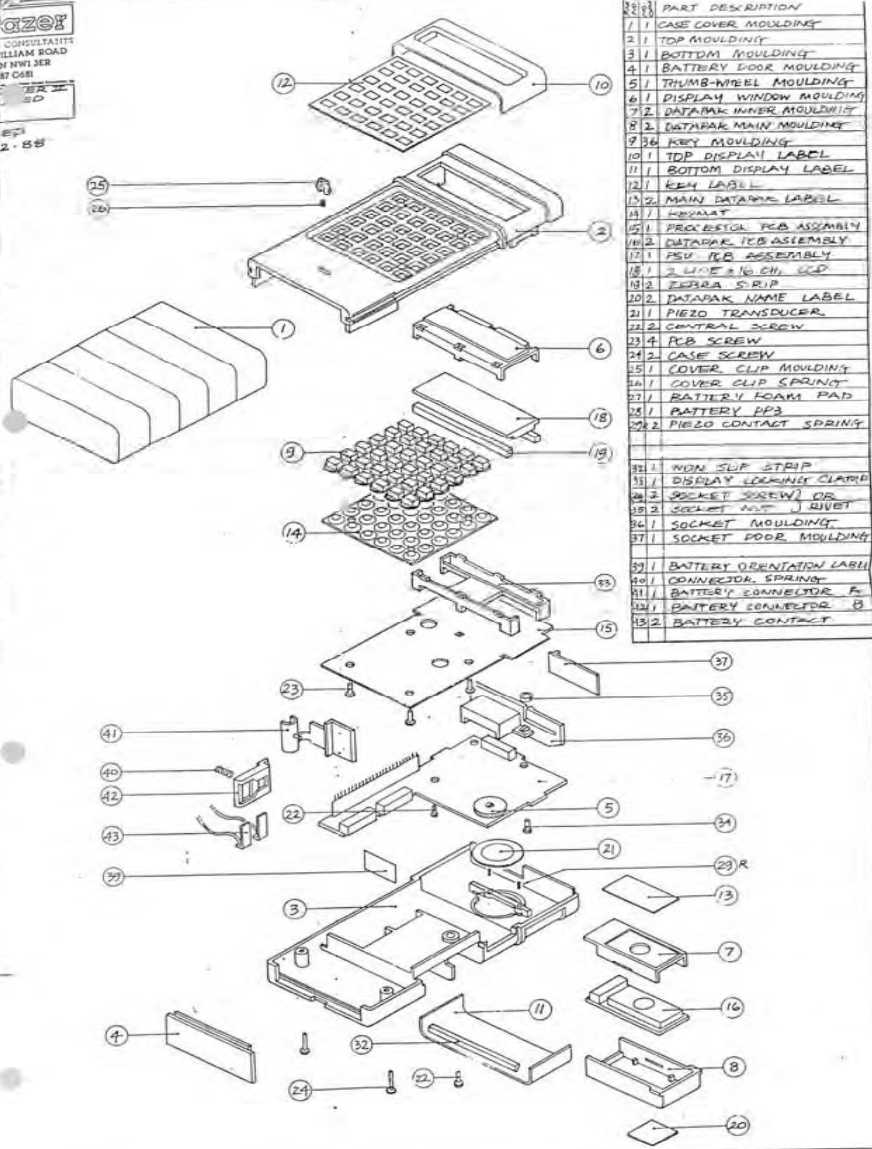


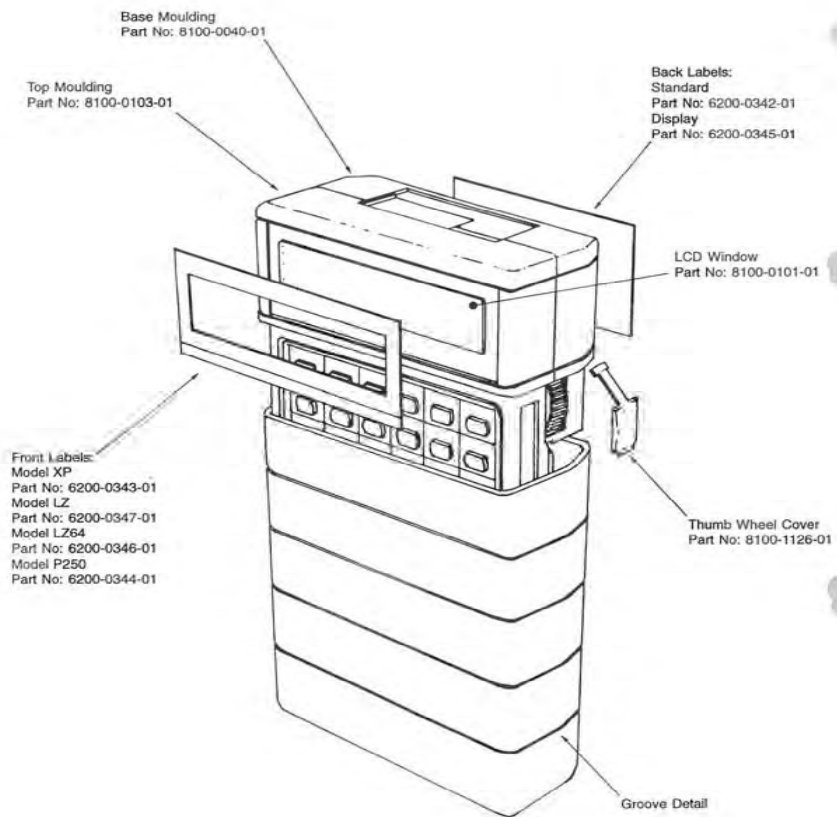
**QZOF**  
 CONSULTANTS  
 111 MILLAM ROAD  
 SINGAPORE  
 TEL 338 8888  
 FAX 338 8888  
 2-88



| PART NO | PART DESCRIPTION          |
|---------|---------------------------|
| 1       | CASE COVER MOULDING       |
| 2       | TOP MOULDING              |
| 3       | BOTTOM MOULDING           |
| 4       | BATTERY DOOR MOULDING     |
| 5       | THUMB-WHEEL MOULDING      |
| 6       | DISPLAY WINDOW MOULDING   |
| 7       | DATAPAK INNER MOULDING    |
| 8       | DATAPAK MAIN MOULDING     |
| 9       | KEY MOULDING              |
| 10      | TDP DISPLAY LABEL         |
| 11      | BOTTOM DISPLAY LABEL      |
| 12      | KEY LABEL                 |
| 13      | MAIN DATAPAK LABEL        |
| 14      | KEYMAT                    |
| 15      | PROCESSOR PCB ASSEMBLY    |
| 16      | DATAPAK PCB ASSEMBLY      |
| 17      | PSU PCB ASSEMBLY          |
| 18      | 2 LINE 2 IN CH. LCD       |
| 19      | PIZZA STRIP               |
| 20      | DATAPAK NAME LABEL        |
| 21      | PIEZO TRANSDUCER          |
| 22      | CENTRAL SCREW             |
| 23      | P.B. SCREW                |
| 24      | CASE SCREW                |
| 25      | COVER CLIP MOULDING       |
| 26      | COVER CLIP SPRING         |
| 27      | BATTERY FOAM PAD          |
| 28      | BATTERY PPS               |
| 29      | PIEZO CONTACT SPRING      |
| 30      | NON SLIP STRIP            |
| 31      | DISPLAY LOCKING CLAMP     |
| 32      | SOCKET SCREW OR           |
| 33      | SOCKET NUT J RIVET        |
| 34      | SOCKET MOULDING           |
| 35      | SOCKET DOOR MOULDING      |
| 36      | BATTERY ORIENTATION LABEL |
| 37      | CONNECTOR SPRING          |
| 38      | BATTERY CONNECTOR A       |
| 39      | BATTERY CONNECTOR B       |
| 40      | BATTERY CONTACT           |

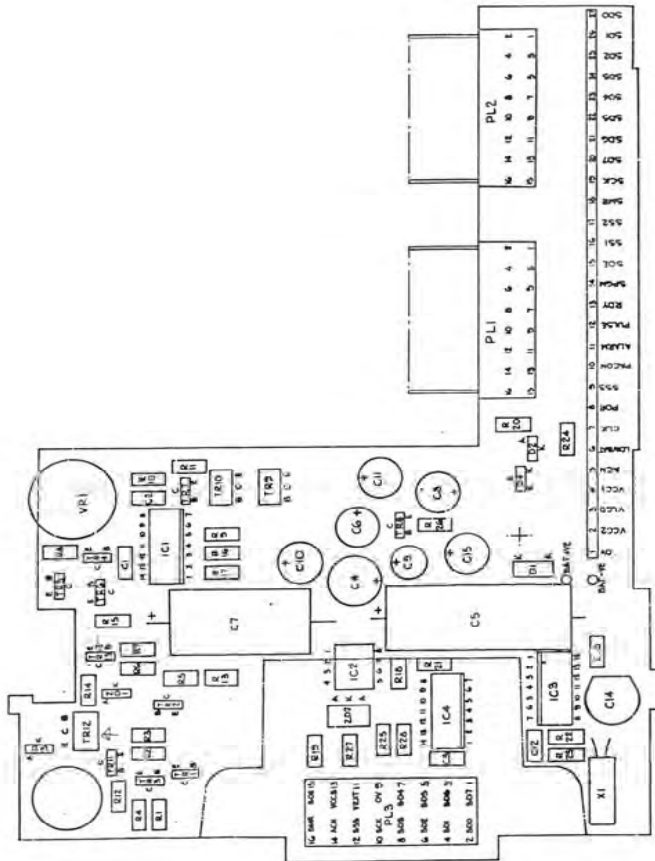
| DIAGRAM PART NO | PARESA PART NO | PSION PART NO | DESCRIPTION                        |
|-----------------|----------------|---------------|------------------------------------|
| 1               | A81000038      | 8100 0038     | MLDG ORG CASE COVER GREY           |
| 2               | A81000103      | 8100 0103     | MLDG ORG CASE LZ TOP GREY NON CE   |
| 3               | A81000040      | 8100 0040     | MLDG ORG CASE BASE GREY NON CE     |
| 4               | A81000041      | 8100 0041     | MLDG ORG BATT DOOR GREY            |
| 5               | A81000045      | 8100 0045     | THUMBWHEEL MLDG                    |
| 5               | A83000004      | 8300 0004     | SCREW THUMBWHEEL 79140-231         |
| 5               | A830000100     | 8300 0010     | M2 WASHER PLAIN                    |
| 9               | A20000048      | 2000 0048     | ORG 36 KEY SET PRINT STD           |
| 9               | A20000087      | 2000 0087     | POS 200 KEY BUTTON SET             |
| 10              | A86000016      | 8600 0016     | ORG. MKII TOP DISP. LAB XP         |
| 10              | A86000038      | 8600 0038     | LZ 4 LINE TOP DISP/LBL             |
| 10              | A86000039      | 8600 0039     | LABEL P350 FRONT DISPLAY           |
| 10              | A86000042      | 8600 0042     | LABEL ORG DISPLAY TOP P464         |
| 11              | A86000015      | 8600 0015     | LABEL ORG. DISPLAY BASE STD        |
| 11              | A86000032      | 8600 0032     | LABEL P-250 REAR. DISPLAY          |
| 12              | A86000013      | 8600 0013     | LBL ORG KYBRD STD                  |
| 12              | A86000037      | 8600 0037     | POS 200 STD KYBRD LBL              |
| 12              | A86000041      | 8600 0041     | POS296 KEYBOARD LABEL              |
| 14              | A87000001      | 8700 0001     | ORG CONDUCTIVE KEYPAD STD          |
| 15              | 100800230      |               | ORG SPARES KIT-CPU POS200          |
| 15              | 1008002610     |               | ORG SPARES KIT-CPU XP MULTI CE     |
| 15              | 1008002710     |               | ORG SPARES KIT-CPU LZ CE           |
| 15              | 1008002910     |               | ORG SPARES KIT-LZ64 SPA/ITA CE     |
| 15              | A20000444      |               | POS 296 PROCESSOR BOARD            |
| 17              | 1008002201     | 2000 0230     | ORG PSU HAND ASSY                  |
| 18              | 1008001601     | 3900 0002     | ORGANISER SPARES 2 LINE LCD        |
| 18              | A39000003      | 3900 0003     | LCD LR.690-C.                      |
| 19              | A37000002      | 3700 0002     | LCD. CONN. F/PITH 70*3.8mm         |
| 21              | A43000003      | 4300 0003     | PIEZZO BUZZER 27mm DIA             |
| 22              | A83000002      | 8300 0002     | SCREW 2mm x 5/16 CSK H SELFTAP     |
| 23              | A83000001      | 8300 0001     | SCREW 2mm x 3/16 PAN H SELFTAP     |
| 24              | A83000003      | 8300 0003     | SCREW 2mm x 1/2 CSK H SELFTAP      |
| 25              | A81000043      | 8100 0043     | MLDG RG COVER CLIP GREY            |
| 26              | A84000005      | 8400 0005     | SPRING ORG COVER CLIP              |
| 29              | A84000007      | 8400 0007     | SPRING ORG BUZZER                  |
| 33              | A81000046      | 8100 0046     | MLDG ORG LCD CLAMP                 |
| 34              | A83000008      | 8300 0008     | SCREW M 2.5 POZI PAN               |
| 35              | A83000009      | 8300 0009     | NUT 2.5 HEX (5.0 FLATS)            |
| 36              | A81000102      | 8100 0102     | 4 LINE TOP SLOT                    |
| 37              | A81000048      | 8100 0048     | MLDG ORG TOP PORT DOOR GY          |
| 39              | A62000079      | 6200 0079     | LBL ORG BATT INSERTION             |
| 40              | A84000006      |               | BATTERY CONNECTOR SPRING           |
| 42              | A81000049      |               | MLDG ORG BATTERY CONN B (TERM HSG) |
| 43              | A82000002      |               | BATTERY CONTACT TERMINAL           |
|                 | A47000004      | 4700 0004     | CONNECTOR INTRBRD 27 WAY           |

Revised Organiser Assembly



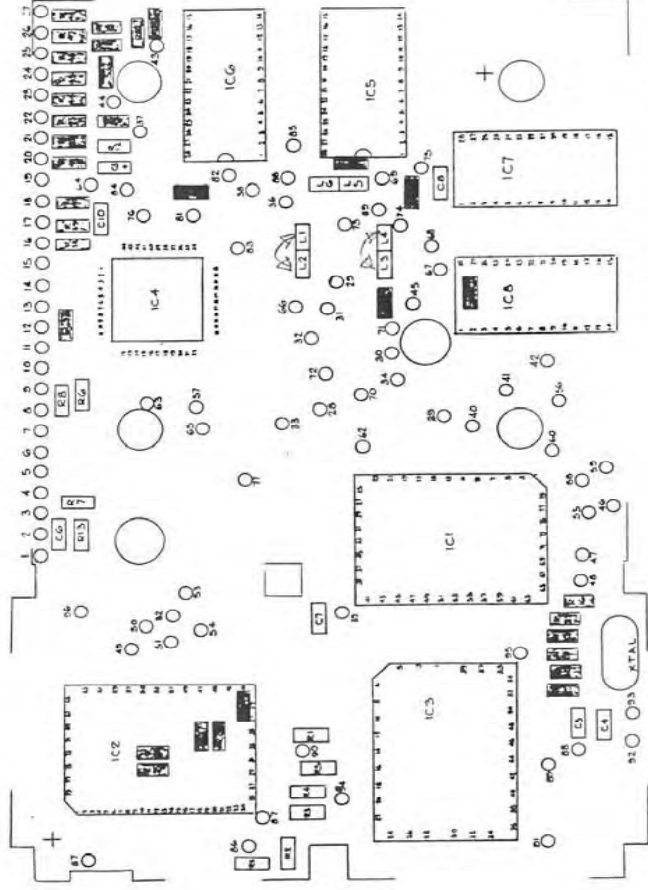
| DIAGRAM PART NO | PARESA PART NO | PSION PART NO | DESCRIPTION                           |
|-----------------|----------------|---------------|---------------------------------------|
| 2               | A8100010301    | 8100 0103 01  | MLDG ORG CASE LZ TOP GREY CE          |
| 3               | A8100004001    | 8100 0040 01  | MLDG ORG CASE BASE GREY CE            |
| 5               | A8100112601    | 8100 1126 01  | MLDG ORG CONTRAST THUMBWHEEL COVER CE |
| 6               | A8100010101    | 8100 0101 01  | MLDG ORG LCD WINDOW 4L                |
| 10              | A6200034301    | 6200 0343 01  | LBL ORG MKII DISPLAY TOP XP           |
| 10              | A6200034401    | 6200 0344 01  | LBL ORG MKII DISPLAY TOP P250         |
| 10              | A6200034601    | 6200 0346 01  | LBL ORG DISPLAY TOP LZ64              |
| 10              | A6200034701    | 6200 0347 01  | LBL ORG DISPLAY TOP LZ                |
| 11              | A6200034201    | 6200 0342 01  | LBL ORG REAR DISPLAY STANDARD         |
| 11              | A6200034501    | 6200 0345 01  | LBL ORG REAR DISPLAY P250             |

ISSUE 5.1 POWER BOARD



| PARESA PART NO | PSION PART NO | DESCRIPTION                          | LOC                     |
|----------------|---------------|--------------------------------------|-------------------------|
| 1008002201     | 2000 0230     | ORG PSU HAND ASSY                    |                         |
| A31000005      | 3100 0005     | RES CH 1206/1K/10%/1.8W              | R8, 12, 26              |
| A31000010      | 3100 0010     | RES CH 1206/1M/5%/0.8W               | R1, 3                   |
| A31000011      | 3100 0011     | RES CH 1206/100K/2%/1.8W             | R3, 21, 23              |
| A31000012      | 3100 0012     | RES CH 1206/510K/5%/0.8W             | R5, 9                   |
| A31000013      | 3100 0013     | RES CH 1206/160K/5%/0.8W             | R7, 10                  |
| A31000014      | 3100 0014     | RES CH 1206/470R/10%/0.8W            | R11, 25, 28             |
| A31000015      | 3100 0015     | RES CH 1206/390K/5%/1.8W             | R16                     |
| A31000016      | 3100 0016     | RES CH 1206/24K/5%/1.8W              | R17                     |
| A31000017      | 3100 0017     | RES. CR32-1206-22K OHM 10%           | R14                     |
| A31000019      | 3100 0019     | RES CH 1206/3K3/5%/1.8W              | R6                      |
| A31000035      | 3100 0035     | CHIP RES 1206 4R7 5%                 | R27                     |
| A31000036      | 3100 0036     | RES CH 1206/220R/5%/0.8W             | R4                      |
| A32000003      | 3200 0003     | CAP CH 1206/ 12pF/ 5%                | C12                     |
| A32000008      | 3200 0008     | CAP. CH 1206 / 100nF / 20%           | C3                      |
| A32000015      | 3200 0015     | CAP CH 1206/ 220pF/ 5%               | C1, 2                   |
| A32000018      | 3200 0018     | CAP CH 1206/ 27pF/ 5%                | C13                     |
| A34000002      | 3400 0002     | DIODE SIG BAS16 SOT23                | D2, D3 D1 (pre issue 5) |
| A34000005      | 3400 0005     | DIODE DUAL BAW56 SOT23               | D4                      |
| A34000010      | 3400 0010     | ZENER BZX84C 33V                     | ZD1                     |
| A34000016      | 3400 0016     | BZV49C 15V ZENER DIODE SOT89         | ZD2                     |
| A34010001      | 3401 0001     | BCX19 SOT TRANS NPN                  | TR11, 13                |
| A34010002      | 3401 0002     | TRAN BCW 31 NPN SOT 23               | TR1, 2, 3, 4, 7         |
| A34010003      | 3401 0003     | TRAN BCW30 PNP SOT23                 | TR8                     |
| A34010004      | 3401 0004     | BCX18 SOT23 TRANS PNP                | TR5                     |
| A34010006      | 3401 0005     | TRAN BCX51 PNP SOT 89                | TR9, 12                 |
| A35090011      | 3509 0011     | CMOS IC HEF4093BT SO14               | IC4                     |
| A35090012      | 3509 0012     | LM324D (SO14)                        | IC1                     |
| A35090017      | 3509 0017     | IC TSC04 REF 308                     | IC2                     |
| A35090018      | 3509 0018     | IC HEF4011UBT QUAD/NAND SO14-X3, IC3 |                         |
| A42010001      | 4201 0001     | CAP. E 100uF 40V A 16*8D             | C7                      |
| A42010002      | 4201 0002     | CAP. E 470uF 16V A 20*8D             | C5                      |
| A42020002      | 4202 0002     | CAP. E 10uF 25V R 5*5D               | C6, 8, 10, 11, 15       |
| A42020003      | 4202 0003     | CAP. E 1uF 50V R 5*4D                | C9                      |
| A42050002      | 4205 0002     | CAP TRIMMER 11-60 pF                 | C14                     |
| A43000004      | 4300 0004     | POTENCIOMETER 10KOHM (MKII)          | VR1                     |
| 1008003501     | 4700 0003     | MOLEX SOCKET 90-152-2216             | SK1                     |
| A47000005      | 4700 0005     | CONN MOLEX (LONG PIN) 70244-0PL1, 2  |                         |
| A49010001      | 4901 0001     | XTAL .32768 Hz TC-38                 | X1                      |
| A81000045      | 8100 0045     | THUMBWHEEL MLDG                      |                         |
| A81000049      | 8100 0049     | MLDG ORG BATTERY CONN B (TERM HSG)   |                         |
| A81000050      | 8100 0050     | MLDG ORG BATTERY CONN A (SWIVEL)     |                         |
| A81000102      | 8100 0102     | 4 LINE TOP SLOT                      |                         |
| A82000002      | 8200 0002     | BATTERY CONTACT TERMINAL             |                         |
| A83000004      | 8300 0004     | SCREW THUMBWHEEL 79140-231           |                         |
| A83000008      | 8300 0008     | SCREW M 2.5 POZI PAN                 |                         |
| A83000009      | 8300 0009     | NUT 2.5 HEX (5.0 FLATS)              |                         |
| A830000100     | 8300 0010     | M2 WASHER PLAIN                      |                         |
| A84000006      | 8400 0006     | BATTERY CONNECTOR SPRING             |                         |
| A47000004      | 4700 0004     | CONNECTOR INTRBRD 27 WAY             |                         |

11 55 KIT 2 PROCESSOR BOARD



NOTE: RESISTORS SHOWN THUS ARE PRINTED RESISTORS

155 3A 2/19/88

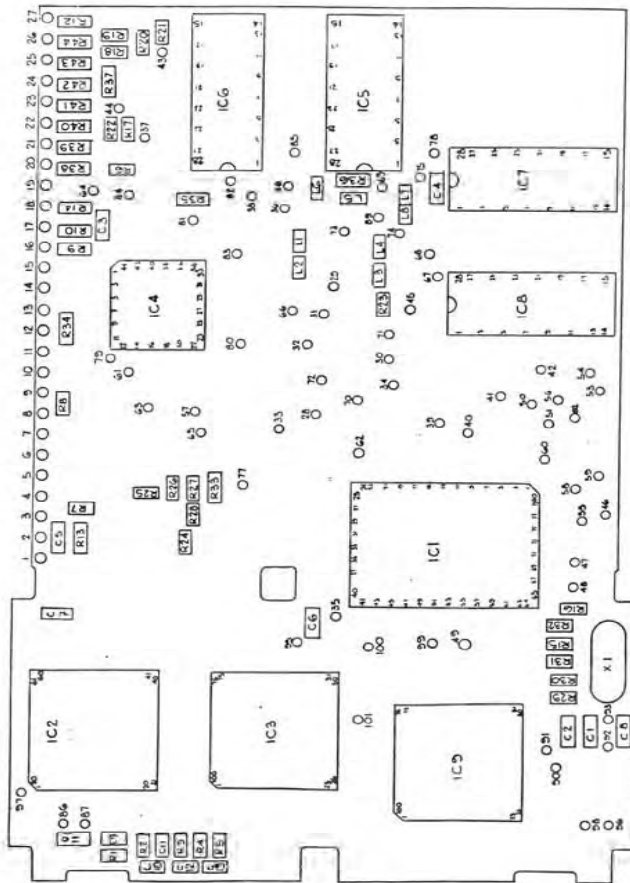
**WDS** WATFORD DESIGN SERVICES LTD  
 NEWELL ROAD, GATA DAM, GERRARD PARADE, WATFORD, Herts WD17 4EJ  
 TEL: 0494 474221

PRINTED CIRCUIT BOARD  
 DATE: 15/08/88  
 DRAWN BY: J.P.  
 CHECKED BY: J.P.  
 APPROVED BY: J.P.

PSION  
 PROJECT: MK 2 (MK-8)  
 SHEET: 1 OF 1

| PARESA PART NO | PSION PART NO | DESCRIPTION                            | LOC        |
|----------------|---------------|--|------------|
| 1008001601     | 3900 0002     | ORGANISER SPARES 2 LINE LCD            |            |
| 1008002301     |               | ORG SPARES KIT-CPU POS200              |            |
| 1008002610     |               | ORG SPARES KIT-CPU XP MULTI CE         |            |
| A20000444      |               | POS 296 PROCESSOR BOARD                |            |
| A31000030      | 3100 0030     | RES CH 1206/100R/10%/0.8W              | R13        |
| A31010001      | 3101 0001     | RES. CH 0805/ZERO/1:16W                | L7         |
| A31010002      | 3101 0002     | CH. RES. 0805. 6K8. 5%                 | R1, 2, 4-8 |
| A31010003      | 3101 0003     | CH.RES.0805. 300K 5%                   | R15-32     |
| A32000004      | 3200 0004     | CAP CH 1206/ 20pF/ 10%                 | C1, 2      |
| A32000008      | 3200 0008     | CAP. CH 1206 / 100nF / 20%             | C3-6       |
| A35010002      | 3501 0002     | LCD DRIVER HD44780                     | IC2        |
| A35010003      | 3501 0003     | PROCESSOR HD6303XPF                    | IC1        |
| A35010004      | 3501 0004     | LCD SEG DRIVER HD44100H                | IC3        |
| A35020003      | 3502 0003     | IC 32K x 8 SRAM 150n SO28 (KM62256 BL) | IC7        |
| A35040025      | 3504 0025     | PROM POS-200                           | IC5        |
| A35040028      | 3504 0028     | MULTI/L PROM XP OP/SYS                 | IC5        |
| A35040029      | 3504 0029     | MULTI/L PROM XP TEXT                   | IC6        |
| A35040035      | 3504 0035     | PROM P350                              | IC5        |
| A35040051      | 3504 0051     | PROM POS-296                           | IC5        |
| A35090016      | 3509 0016     | NEC SEMI CUSTOM IC UPD65006 GB-314     | IC4        |
| A37000002      | 3700 0002     | LCD. CONN. F/PITH 70*3.8mm             |            |
| A49020002      | 4902 0002     | CRYSTAL 3.6864 MHz                     | XL1        |
| A81000046      | 8100 0046     | MLDG ORG LCD CLAMP                     |            |

ISSUE 4.1 PROPELLOR BOARD



FOR 4 LINE MACHINES

1. REMOVE LINKS L1, L3 AND L5
2. MOVE LINK L7 TO POSITION L8
3. REPLACE NEG SEMICUSTOM WITH TEXAS SEMICUSTOM
4. REPLACE RES WITH VERSION 4.6 AND LOCARD IC6.

| PARESA PART NO | PSION PART NO | DESCRIPTION                            | LOC    |
|----------------|---------------|--|--------|
| 1008002710     |               | ORG SPARES KIT-CPU LZ CE               |        |
| 1008002910     |               | ORG SPARES KIT-LZ64 SPA/ITA CE         |        |
| A31000030      | 3100 0030     | RES CH 1206/100R/10%/0.8W              | R13    |
| A31010001      | 3101 0001     | RES. CH 0805/ZERO/1:16W                |        |
| A31010003      | 3101 0003     | CH.RES.0805. 300K 5%                   | R15-32 |
| A31010004      | 3101 0004     | CHIP RES 0805 3K6 5%                   | R1-8   |
| A32000004      | 3200 0004     | CAP CH 1206/ 20pF/ 10%                 | C1, 2  |
| A32000008      | 3200 0008     | CAP. CH 1206 / 100nF / 20%             | C3-8   |
| A35010003      | 3501 0003     | PROCESSOR HD6303XPF                    | IC1    |
| A35010005      | 3501 0005     | LCD DRIVER HD66780XXX (QFP1003H)       | IC2    |
| A35010006      | 3501 0006     | LCD SEG DRVR HD66100 (QFP1003H)        | IC3, 9 |
| A35020003      | 3502 0003     | IC 32K x 8 SRAM 150n SO28 (KM62256 BL) | IC7    |
| A35040055      | 3504 0055     | EPROM LZ ENG/SPN/ITA V4.6              | IC5    |
| A35040057      | 3504 0057     | EPROM LZ64 ENG/SPN/ITA V4.6            | IC5    |
| A3504006001    | 3504 0054     | PROM P464                              | IC5    |
| A35090019      | 3509 0019     | TEXAS INST SEMICUSTOM IC CF70043       | IC4    |
| A37000002      | 3700 0002     | LCD. CONN. F/PITH 70*3.8mm             |        |
| A39000003      | 3900 0003     | LCD LR.690-C.                          |        |
| A49020002      | 4902 0002     | CRYSTAL 3.6864 MHz                     | X1     |
| A81000046      | 8100 0046     | MLDG ORG LCD CLAMP                     |        |
| A8100010101    | 8100 0101     | MLDG ORG LCD WINDOW 4L                 |        |

| PARESA PART NO | PSION PART NO | DESCRIPTION | LOC |
|----------------|---------------|-------------|-----|
|----------------|---------------|-------------|-----|

**PLASTIC PARTS**

|           |           |                            |  |
|-----------|-----------|----------------------------|--|
| A81000082 | 8100 0082 | ORG. PRNTR. MAIN BODY TOP. |  |
| A81000083 | 8100 0083 | ORG. PRNTR. MAIN BODY BTM. |  |
| A81000084 | 8100 0084 | PRINTER TILT COVER         |  |
| A81000085 | 8100 0085 | PRINTER BATTERY DOOR       |  |
| A81000086 | 8100 0086 | PRINTER PAPER COVER        |  |
| A81000087 | 8100 0087 | PRINTER GUIDE PLATE        |  |
| A81000088 | 8100 0088 | PRINTER INFILL PLATE       |  |
| A81000090 | 8100 0090 | PAPER GUIDE MOVING         |  |
| A81000091 | 8100 0091 | PAPER GUIDE OVER-MOULDED   |  |
| A81000092 | 8100 0092 | ORG PRNTR SOKT DOOR MLDG   |  |
| A81000102 | 8100 0102 | 4 LINE TOP SLOT            |  |

**OTHER PARTS**

|           |           |                           |  |
|-----------|-----------|---------------------------|--|
| BAT550AAH | 4900 0017 | PACK 550mA PRINTER II     |  |
| A62000155 | 6200 0155 | PTR. TOP SLOT LBL PSION   |  |
| A89000010 | 8900 0010 | PRINTER HEADS             |  |
| A89000011 | 8900 0011 | PRINTER MECHANISM + HEADS |  |

**INTERCONNECTION PCB**

|           |           |  |  |
|-----------|-----------|--|--|
| A47000028 | 4700 0028 | STRAIGHT PIN HEADER MALE MOLEX 902J3     |  |
| A49000005 | 4900 0005 | D/C POWER JACK 2.1 x 5 mm 0470-01-230 J7 |  |

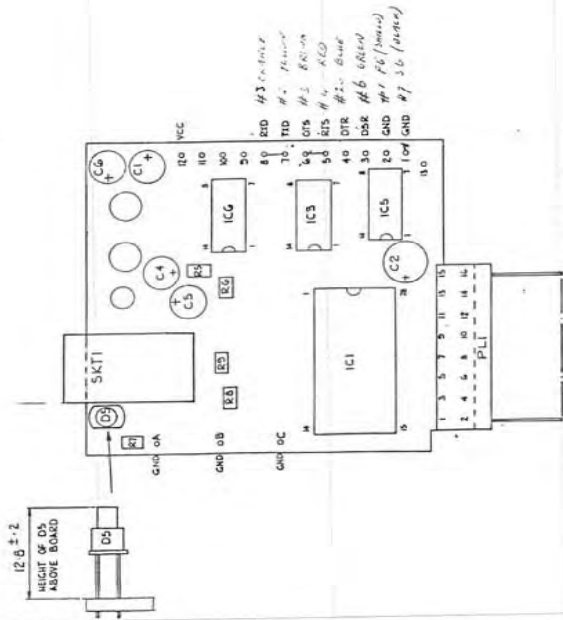
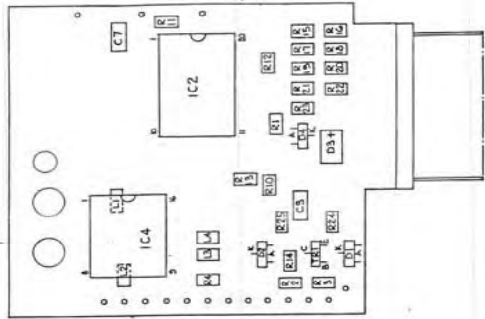
**MAIN PRINTER BOARD**

|               |           |                                     |             |
|---------------|-----------|-------------------------------------|-------------|
| A31000011     | 3100 0011 | RES CH 1206/100K/2%/1:8W            | R33-36, 41  |
| A31010027     | 3101 0027 | RES. CH 0805/4.7K 2% /1:16W R40     | R40         |
| A31000014     | 3100 0014 | RES CH 1206/470R/10%/0:8W           | R7          |
| A31000036     | 3100 0036 | RES CH 1206/220R/5%/0:8W            | R38         |
| A41055002     | 4105 5002 | RES 82 OHM 0,5W 5%                  | R42         |
| BZX84C-2V705W |           | SMD ZENER BZX84C 2,7V 0,5W          | D1          |
| BZX84C-6V205W |           | SMD ZENER BZX84C 6,2V 0,5W          | D9          |
| A34000002     | 3400 0002 | DIODE SIG BAS16 SOT23               | D2, 3       |
| A35010035     | 3501 0035 | 78C10 FLATPACK D18/16               | IC1         |
| A35090033     | 3509 0033 | IC 74HCT244 BUFFER SO20 (D18/17)    | IC2, 3, 8   |
| A45060010     | 4506 0010 | SMD IC 74HC373                      | IC5,9       |
| A35090007     | 3509 0007 | CMOS IC HEF4024BT                   | IC10, 11    |
| A35040027     | 3504 0027 | PSION DATAC PRINTER PROM            | IC6, 12     |
| A42060004     | 4206 0004 | CAP TANT 1uF 35V 20%                | C1-3, 6     |
| 1008003501    | 4700 0003 | MOLEX SOCKET 90-152-2216            | CONN 2      |
| SMD-74HC00    |           | SMD C.I. 74-HC-00                   | IC13        |
| SMD-74HC32    |           | SMD C.I. 74-HC-32 (IC14, 15)        | IC14, 15    |
| SMD-74HC175   |           | HS-CMOS 74HC175 QUAD D FLIP-FLOP (I | IC16        |
| SMD-LM393     |           | SMD C.I. LM-393-DS (IC7)            | IC7         |
| SMD-BCX55     |           | TRAN. SMD BCX55 (TR1-11)            | TR1-11      |
| SMD-BCX52     |           | TRAN SMD BCX52 (TR12,13)            | TR12, 13    |
| SMD-BC846     |           | TRAN SMD BC846 B (TR14-17, 20)      | TR14-17, 20 |

**PSION PRINTER II UNBOXED**

|           |  |                     |  |
|-----------|--|---------------------|--|
| A20000205 |  | PRINTER II ASSY STD |  |
|-----------|--|---------------------|--|

RS232/SW209/BARCODE BOARD VERSION 6.

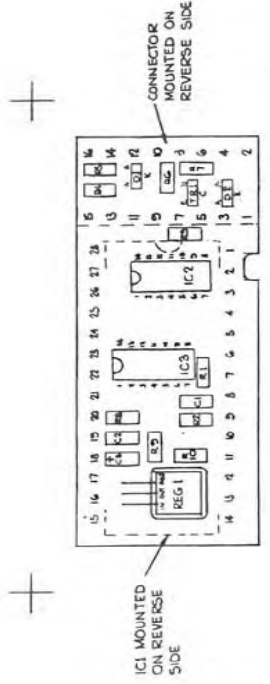


12.6 ±.2  
 HEIGHT OF CH  
 ABOVE BOARD

**O.P. CIRCUITS** TEL: 01-41-3100 FAX: 01-41-3101  
 11th, G/2/16/89  
 CLIENT: PSION P.L.C.

| PARESA PART NO                         | PSION PART NO | DESCRIPTION                                 | LOC       |
|--|---------------|---|-----------|
| <b>COMMS LINK USSING VERSION 6 PCB</b> |               |   |           |
| A31010006                              | 3101 0006     | RES. CH 0805/2K2/5%/0.16W                   |           |
| A31010009                              | 3101 0009     | RES. CH 0805/1K/5%/1.16W                    |           |
| A31010011                              | 3101 0011     | RES. CH 0805/47K/5%/1.16W                   |           |
| A31010027                              | 3101 0027     | RES. CH 0805/4.7K 2%/1.16W R40              |           |
| A32000001                              | 3200 0001     | CHIP CAP. 1206 473-J 50VDC 47nF             |           |
| A34000002                              | 3400 0002     | DIODE SIG BAS16 SOT23                       |           |
| A34010002                              | 3401 0002     | TRAN BCW 31 NPN SOT 23                      | TR2, 3, 7 |
| A3506000401                            | 3504 0013     | IC MROM COMM LINK V4.2                      |           |
| A35040019                              | 3504 0019     | BAR CODE PROM                               |           |
| A35040022                              | 3504 0022     | COMS/ BAR /SNIPE PROM                       |           |
| A35090003                              | 3509 0003     | I.C HEF 4011 BT                             |           |
| A35090007                              | 3509 0007     | CMOS IC HEF4024BT                           |           |
| A35090014                              | 3509 0014     | RS232 TRANS/RECEIVER (MAX232CWE)            |           |
| A35090033                              | 3509 0033     | IC 74HCT244 BUFFER SO20 (D18/17)            |           |
| A42020004                              | 4202 0004     | 10uF 16V 35 (3.5MM X 5MM9)                  |           |
| A42020005                              | 4202 0005     | 47uF 6.3V 35 (3.5MMX5MM)                    |           |
| A44030006                              | 4403 0006     | LED RED LIGHTHS. TYP 2MMD                   |           |
| A47000081                              | 4700 0081     | 16PIN HEADER RA SPECIAL                     |           |
| A49000005                              | 4900 0005     | D/C POWER JACK 2.1 x 5 mm 0470-01-230 HSDIN |           |
| A47010013                              | 4701 0013     | 25WY CBLE ASSMBLY MOULDED                   |           |
| A62000109                              | 6200 0109     | COMMS LINK LABEL                            |           |
| A81000074                              | 8100 0074     | CABLE GROMMET                               |           |
| A83000003                              | 8300 0003     | SCREW 2mm x 1/2 CSK H SELF TAP              |           |
| A85000001                              | 8500 0001     | CABLE GROMMET GRIP RING                     |           |

128 K DATAPACK



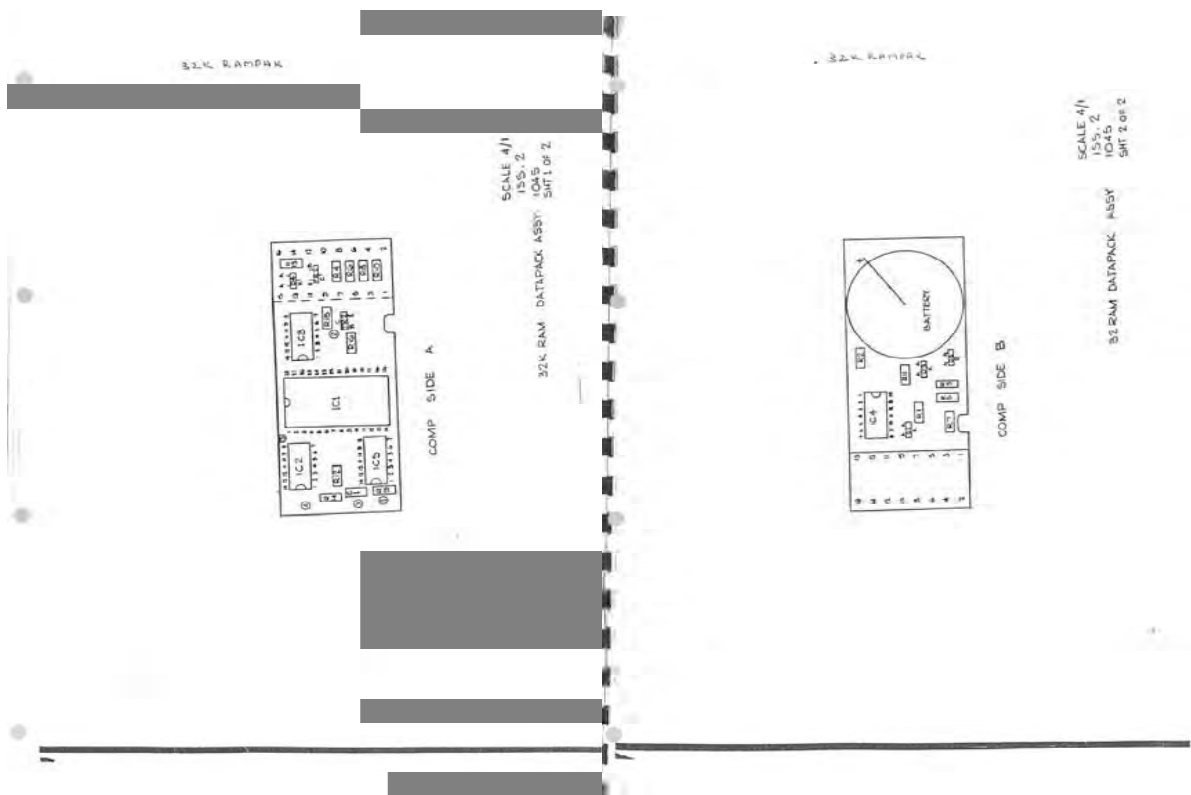
128 K DATAPACK ASSY  
(VIEWED FROM SURFACE MOUNT  
COMP SIDE)

155.2

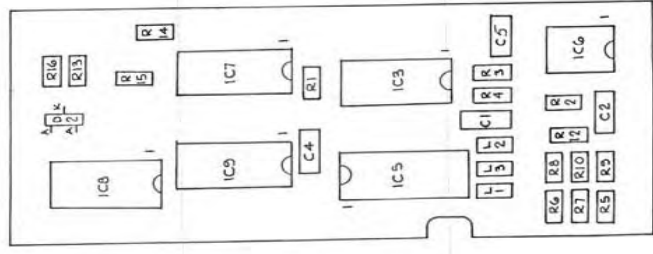
1038

| PARESA PART NO | PSION PART NO | DESCRIPTION                     | LOC |
|----------------|---------------|---------------------------------|-----|
| A32000001      | 3200 0001     | CHIP CAP. 1206 473-J 50VDC 47nF |     |
| A32000005      | 3200 0005     | CHIP CAP 1.5uF 6VW TANT C5      | C5  |
| A34000001      | 3400 0001     | DUAL DIODE BAV70 SOT23          |     |
| A34010002      | 3401 0002     | TRAN BCW 31 NPN SOT 23          |     |
| A35090007      | 3509 0007     | CMOS IC HEF4024BT               |     |
| A45010003      | 4501 0003     | IIC. REGULATOR LM317LZ (TO92)   |     |
| EP-27C128      | 4503 0006     | EPROM 27C128                    |     |

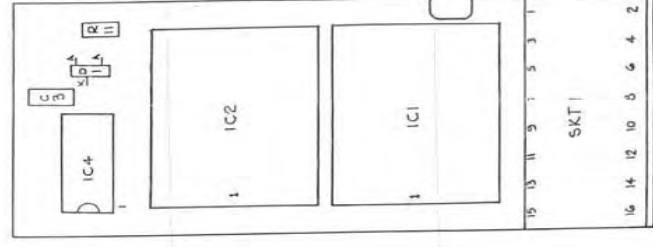




| PARESA PART NO | PSION PART NO | DESCRIPTION                                  |
|----------------|---------------|--|
| A31000005      | 3100 0005     | RES CH 1206/1K/10%/1:8W                      |
| A32010001      | 3201 0001     | 100nF CHIP CAP 1210                          |
| A34000002      | 3400 0002     | DIODE SIG BAS16 SOT23                        |
| A34000026      | 3400 0026     | DIODE DUAL BAT54C SCHOTKY                    |
| A34010002      | 3401 0002     | TRAN BCW 31 NPN SOT 23                       |
| A34010003      | 3401 0003     | TRAN BCW30 PNP SOT23                         |
| A35020003      | 3502 0003     | IC 32K x 8 SRAM 150n SO28 (KM62256 BLG - 10) |
| A35090004      | 3509 0004     | AND GATE IC HEF4081BT                        |
| A35090007      | 3509 0007     | CMOS IC HEF4024BT                            |
| A35090011      | 3509 0011     | CMOS IC HEF4093BT SO14                       |
| A49000015      | 4900 0015     | LITHIUM BTRY PCB MTG CR 2032 AHO             |
| A87000010      | 8700 0010     | PLASTIC INSULATION SPACER                    |



SIDE 2



SIDE 1

**P.P. CIRCUITS**  
 64 RYECROFT CRES, BARNET, HERTS, EN5 3BZ.  
 TEL: 01-441-5300  
 DRN. C.P.  
 CIKD. C.P.C.  
 ISS. 1-0 2/3/90

| PARESA PART NO | PSION PART NO | DESCRIPTION                 |
|----------------|---------------|-----------------------------|
| A31010001      | 3101 0001     | RES. CH 0805/ZERO/1:16W     |
| A31010011      | 3101 0011     | RES. CH 0805/47K/5%/1:16W   |
| A31010056      | 3101 0056     | RES. CH 0805/240R/2%/1:16W  |
| A31010057      | 3101 0057     | RES. CH 0805-2K2-2%/1:16W   |
| A31010058      | 3101 0058     | RES. CH 0805/33K/2%/1:16W   |
| A32000008      | 3200 0008     | CAP. CH 1206 / 100nF / 20%  |
| A34000002      | 3400 0002     | DIODE SIG BAS16 SOT23       |
| A35030004      | 3503 0004     | IC 128K*8 FLASH 200n PLCC32 |
| A35090003      | 3509 0003     | I.C HEF 4011 BT             |
| A35090007      | 3509 0007     | CMOS IC HEF4024BT           |
| A35090009      | 3509 0009     | CMOS IC HEF4001BT           |
| A35090030      | 3509 0030     | IC LM317 REG SO8            |
| A35090058      | 3509 0058     | IC 74HC174 SO16 HEX CATCH   |

